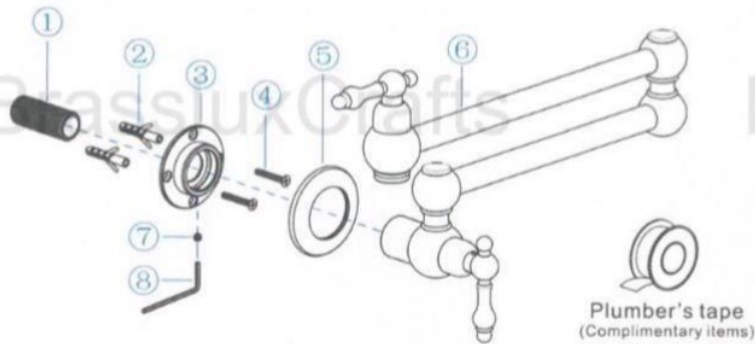


BrassluxCrafts HIGH-QUALITY FAUCETS

BrassluxCrafts INSTALLATION GUIDE

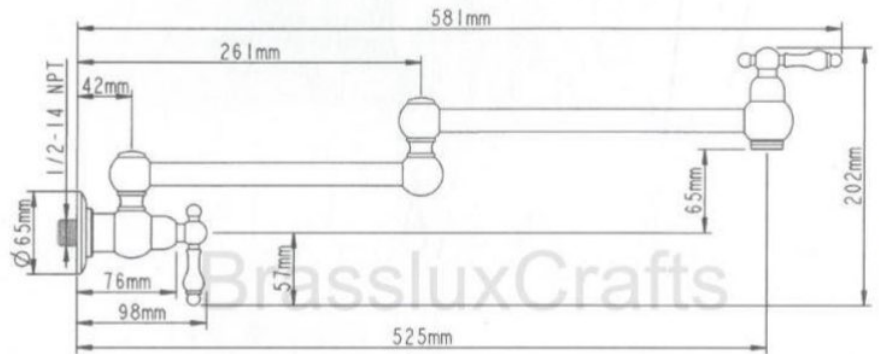
SERVICE PARTS:



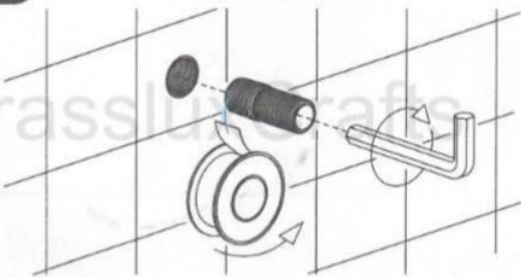
No.	DESCRIPTION
1	Straight joint (NPT to NPSM)
2	Plastic plug
3	Base
4	Self-tapping screw
5	Cover
6	Tap
7	Hex socket screw
8	Hex bar

NOTES AND DIMENSIONS:

1. Please check that all components and tools are present.
2. Before installation ensure that all feed lines are clear of debris and on/off valve is present.
3. Ensure water pressure is between 20~125 PSI. (includes combination of hot and cold feed lines)
4. Pictures in the manual are general in content and may not represent exactly your purchased faucet. If you are having difficulties please contact a professional plumber.
5. If you will be away from home for an extended period you should shut off the main water supply.

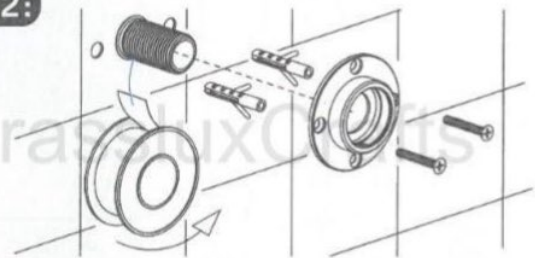


Step 1:



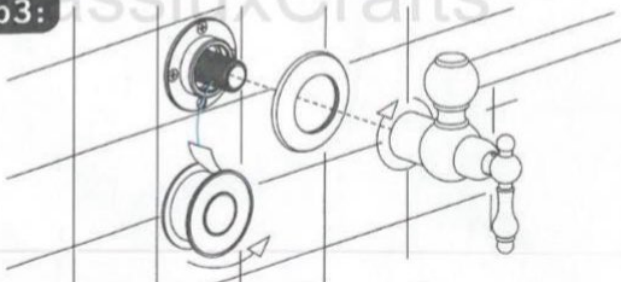
Wrap the shorter end of the joint with the plumber's tape for 18 ~ 20 turns (more is better), then screw the joint into the wall and tighten with a 10mm hex bar.

Step 2:



Select 6mm drill bit and fix the plastic plugs in the wall with an impact drill, and be careful not to damage the hidden pipe in the wall when drilling. Continue to wrap the remaining part of the joint with the plumber's tape for 10~14 turns, then screw the base on the wall.

Step 3:



Adjust the cover to the base, then wrap the exposed part of the joint with the plumber's tape about 20~23 turns in total including step 2. (more is better), and fasten the tap to the end of the base.

Step 4:



Remove the cover from the base and fix the small screw in the base to tighten the tap, then reset the cover on the wall. Installation complete.