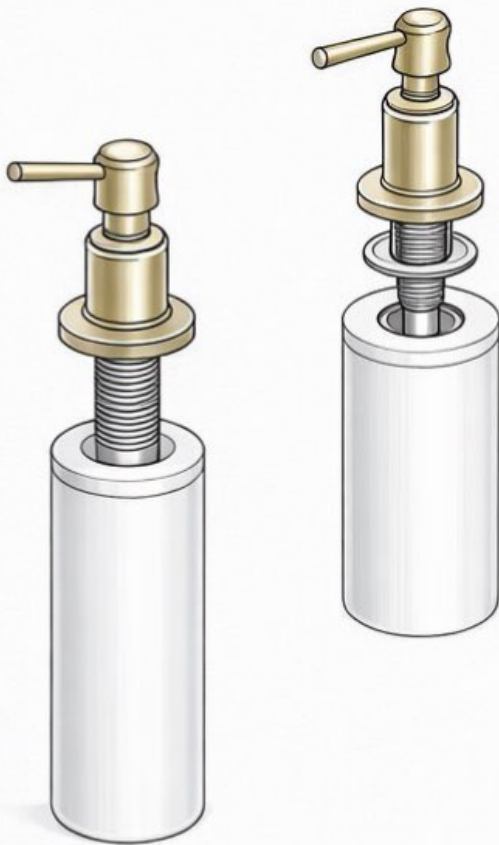




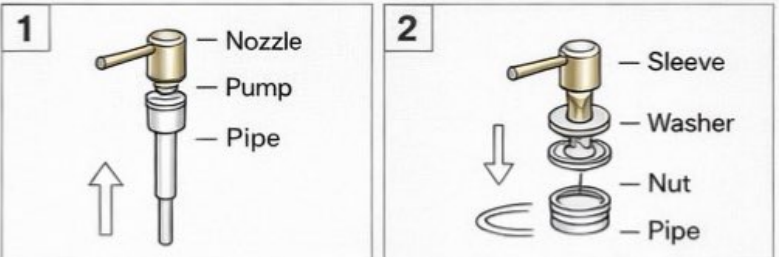
BRASSLUX

CRAFTS

Soap Dispenser Installation Instructions



Note: This product is used to illustrate installation.
Your product may be a different style but will in in same way.



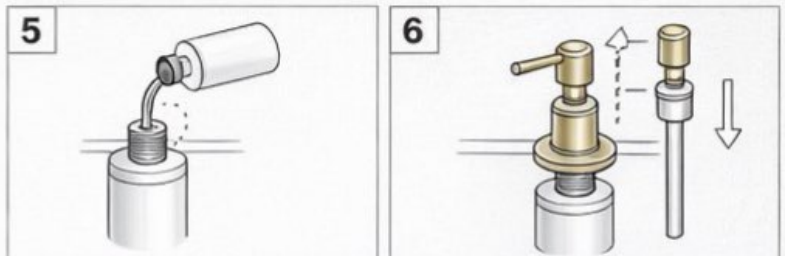
1. Install pipe into soap pump.

2. Remove washer and nut from soap dispenser sleeve.



3. Insert soap dispenser sleeve through sink hole and secure with washer and nut.

4. Screw soap bottle into soap dispenser sleeve, hand tighten.



5. Pour in liquid soap (or hand lotion).

6. Put the pump nozzle and plastic pump pipe into sleeve.